

UK Groundwater Forum  
13 May 2008

**Getting the balance right**  
**Water resources management in the UK**

Bruce Horton  
Water Resources Policy Adviser, Water UK

[www.water.org.uk](http://www.water.org.uk)

# Challenges

## Growth



# Challenges

Growth

Demographics



# Challenges

Growth

Demographics

Lifestyles



# Challenges

**Growth**

**Demographics**

**Lifestyles**

**Environment**



# Challenges

**Growth**

**Demographics**

**Lifestyles**

**Environment**

**Pollution**



# Challenges

**Growth**

**Demographics**

**Lifestyles**

**Environment**

**Pollution**

**Climate change**



# Challenges

**Growth**

**Demographics**

**Lifestyles**

**Environment**

**Pollution**

**Climate change**

**Resilience**





# Challenges

**Growth**

**Demographics**

**Lifestyles**

**Environment**

**Pollution**

**Climate change**

**Resilience**

**Carbon**



# Challenges

**Growth**

**Demographics**

**Lifestyles**

**Environment**

**Pollution**

**Climate change**

**Resilience**

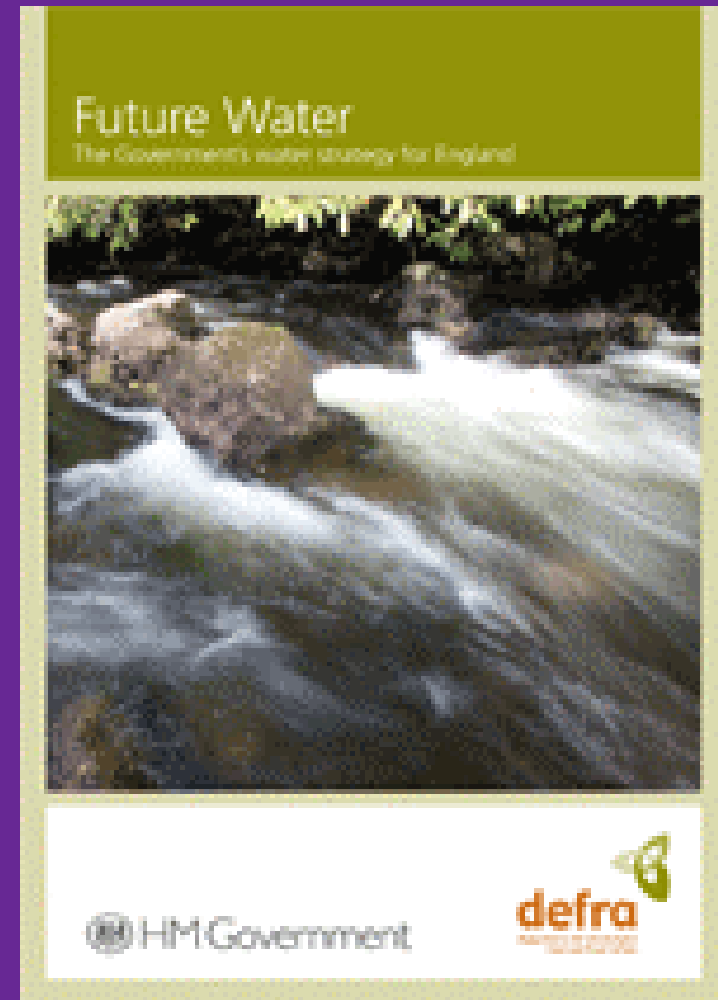
**Carbon**

**Perceptions**



# Solutions

- Policy framework



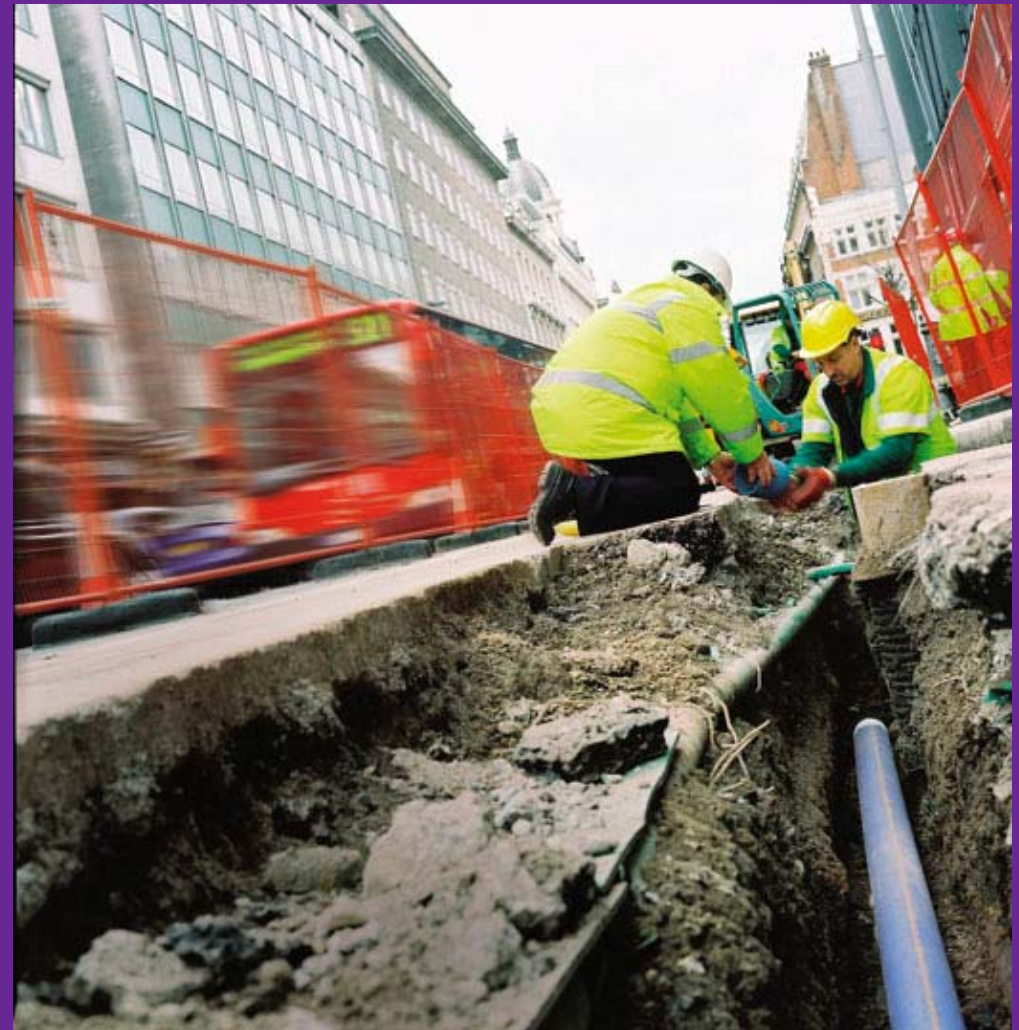
# Solutions

- Policy framework
- Water efficiency



# Solutions

- Policy framework
- Water efficiency
- Leakage



# Solutions

- Policy framework
- Water efficiency
- Leakage
- Metering



# Solutions

- Policy framework
- Water efficiency
- Leakage
- Metering
- Tariffs & billing



Yarra Valley Water Ltd ABN 93 006 002 501

**Yarra Valley Water | a fresh approach**

Enquiries Phone: 13 1721  
Emergency Phone: 13 2762

Customer Number: a000 000  
Invoice Number: 824 0000 0000

**Quarterly Account**

**Total Due \$235.10**  
**Due Date 8 August 2006**

If eligible for a concession the amount due is: \$197.60

Issued 18 April 2005

MR AB SAMPLE & MRS CD SAMPLE  
1 SAMPLE STREET  
SAMPLETOWN VIC 0000

**Account Summary**

1 SAMPLE STREET, SAMPLETOWN  
Property Number 1111 1111, Lot 0 Plan 000 000, 00 00 HA

Product/Service	Description	Amount
Water Usage	1 July 06 to 17 September 06	\$77.29
	Block 1 @ \$0.78 per kilolitre	\$10.59
	Block 2 @ \$0.91 per kilolitre	\$12.00
	Block 3 @ \$1.35 per kilolitre	\$ 5.00
Sewage Disposal	16 April 06 to 30 June 06	\$45.64
	1 July 06 to 17 July 06	\$45.64
Service Charges	01 July 06 to 31 Sept 06	\$47.85
Drainage Charge	On behalf of Melbourne Water	\$14.34
Annual Parks Charge	On behalf of Parks Victoria	\$50.00
<b>TOTAL (GST does not apply)</b>		<b>\$235.12</b>

See reverse for details

**Payment Summary**

Last Account \$174.80  
Paid/Adjusted -\$174.80  
Balance \$0.00  
Total This Account \$235.10  
**Amount Due \$235.10**

**Compare your usage**

Your average usage in litres per day

Number of occupants	Garden size	Type of water use (litres per day)	Efficient water use (litres per day)
1	none	198	135
	small	256	182
	medium	335	248
	large	429	323
2	none	354	239
	small	412	286
	medium	492	352
	large	585	429
3	none	458	341
	small	516	389
	medium	596	455
	large	689	532
4	none	552	443
	small	610	491
	medium	689	557
	large	783	634
5	none	656	545
	small	714	592
	medium	794	658
	large	887	735
6	none	781	646
	small	839	693
	medium	918	759
	large	1012	836

For ways to make your home more water efficient visit [www.yvw.com.au](http://www.yvw.com.au)

**Did you know...**

You can compare your usage to a water efficient household! The enclosed card shows you how. Turn over to find out where you could start saving water in your home today.

**Payment Slip**

Customer Number: a000 000  
Invoice Number: 824 0000 0000

**Total Due \$235.10**  
**Due Date 8 August 2006**

If eligible for a concession the amount due is: \$197.60

To claim an automatic concession on your account, please call 13 1721. Please see reverse for details.

# Solutions

- Policy framework
- Water efficiency
- Leakage
- Metering
- Tariffs & billing
- New resources





# Solutions

- Policy framework
- Water efficiency
- Leakage
- Metering
- Tariffs & billing
- New resources
- Innovative solutions



# Solutions

- Policy framework
- Water efficiency
- Leakage
- Metering
- Tariffs & billing
- New resources
- Innovative solutions
- Link to drought planning



# Groundwater

- GD transposition ongoing
- Aim: preventing and controlling groundwater pollution
- Issues
  - Source vs point controls
  - Transition between existing and future regime
  - Impacts of revising Discharge consents
- Awaiting final consultation



# Scotland & NI

- Similar pressures
- Focus on improving and harmonising security of supply
- Leakage reduction
- Increased non-domestic metering
- Huge uncertainty due to WFD
- Charging review in NI
- Water Mains Rehabilitation Programme



# Summary

- **Water resource planning is a shared responsibility**
- **We have a good system**
- **There is a lot to be proud of**
- **Based on twin-track approach**
- **Communication is key**